

COOL AIR NYC [www.coolairnyc.com](http://www.coolairnyc.com). Tel (212) 744-4224

Simple McQuay PTAC step by step sleeve installation process as shown below:



First step is to remove back of the wall (inside portion of brick or block) slightly larger than actual sleeve. Once back brick is removed rest of the hole is cut from outside utilizing small scaffolding platform that is securely hanged on the window sill.



Precise cut is made with diamond blade saw only 1/4 of an inch larger than actual sleeve. This will minimize any possible leaks. After remaining brick is removed we build a new cement base with specific pitch as required by the building or building architect.



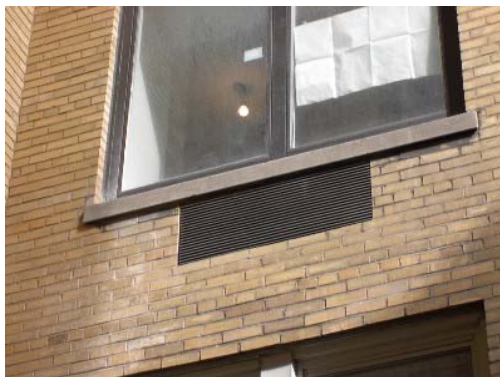
At this stage primer is applied to make stronger bonding between bituthene membrane and cement base. In this case we also installed angle iron wrapped in bithutene membrane on the top of the hole to reinforce window-sill above.



Bithutene membrane is applied to base and sides further preventing any possible leaks.



And finally the sleeve is installed and cemented inside the new wall opening. We also carefully caulk all around outside of the sleeve to make sure no water penetrates inside the building.



View of the finished installation with architectural louver installed flush with outside wall.